

The Nectar News

Official Newsletter of the
Southeast Michigan Butterfly Association



Mission Statement:

It is our mission to share our knowledge to educate people about Lepidoptera and their habitats, to instill and foster a passion for nature in others, and to establish and preserve the environment for butterflies, skippers, and moths.

2025 Board Members:

President:

Joann Schwab

Vice President:

Burt Sloan

Treasurer:

Rebecca Thomason

Secretary and Communications

Director:

Lisa Northey

Membership Committee

Chair:

Cheryl Furlong

Event Coordinator:

Bill Beauregard

SEMBA Email:

sembabutterfly@yahoo.com

SEMBA Website:

<https://www.sembabutterfly.org>

FALL EDITION

JULY GARDEN WALKS



I hope you were able to take advantage of the many garden walks offered by our past and present SEMBA members, they were MAGNIFICENT!!

A HUGE thank you to Elmer Grimm, Brenda Sattler and John Blair for generously opening their gardens for us to enjoy. It just goes to show you that no matter the size of your plot, whether it is a small suburban back yard or many, many acres, everyone can do something! Thank you for allowing us to appreciate and marvel at your labors of love!



&

POTLUCK DINNER



Don't forget to bring a dish to share!

October 17th

It's that time of year again! The teacup raffle fundraiser and potluck dinner are just a few weeks away. All the proceeds go toward grants to help establish or expand a community butterfly garden.

One of this year's grant recipients, The Ypsilanti Awkward Island Garden, sent us some pictures of their garden and a thank you for SEMBA's sponsorship.



The Nectar News

Official Newsletter of the
Southeast Michigan Butterfly Association



Ticket prices are as follows:

\$1.00 = 1 Ticket
\$5.00 = 6 Tickets
\$10.00 = 13 Tickets
\$20.00 = 26 Tickets AND entry in the grand prize drawing.

All the raffle items were donated by the membership.

Thank you to everyone who donated an item(s).

SEMBA Membership:
Time to renew your membership. Dues are \$15 per person. If a family member wants to join, their membership is \$7.50. This family discount can be used for up to 4 additional family members. Dues can be paid at a monthly meeting or mailed to:
SEMBA
P.O. Box 851301
Westland, MI 48185

Did you Know! That SEMBA will certify your garden as a native butterfly garden? You can choose from a paper certificate with your name on it or a yard sign, or both!



Please use the link below <https://www.sembabutterfly.org/calendars> to access the requirements and certification application.

The Monarch migration is upon us! It hard to believe it's already time for the monarchs to start their trek back to Mexico. It seems like they just got here!



Once again Brenda will be traveling to Macheros, Mexico on her mission to observe the Monarch migration. Another mission near and dear to Brenda's heart is her commitment to the local villagers. Each year Brenda collects donations of cash, clothing, school supplies, gently used clothing, stuffed animals and toys. She uses the cash donations to buy things to take with her and to give to "Butterflies & Their People" which is a non-profit organization located in the village of Macheros. Macheros has one of the entries to the Cerro Pelón Monarch Butterfly Sanctuary. But once the butterflies leave in the spring, so do the jobs, and villagers turn to illegal logging to get by. Butterflies & Their People give them an economic alternative: full-time, decently paid work in forest conservation. They employ six forest arborists to patrol Cerro Pelón. The arborists pick up garbage, maintain trails and monitor



The Nectar News

Official Newsletter of the
Southeast Michigan Butterfly Association

wildlife. Most importantly, since they started work, clandestine logging of the sanctuary's core protected area has dropped by 87%. Additionally, the financial fortunes of six local families have improved.

If you would like to donate directly to Butterflies and Their People, please visit <https://butterfliesandtheirpeople.org>

Please bring your donation to the January 16, 2025, meeting. If you have questions about donations, please reach out to Brenda for additional details.



SAVE THE DATE

The Ohio Lepidopterist Annual Meeting – March 29, 2025

The 2025 meeting will be at the Crosby Conference Center at the Toledo Botanical Garden.

Several of us attended this year's meeting and it was filled with great information and a wonderful workshop on mounting butterflies and moths. Check out their website for additional information if you are interested.

<https://www.ohiolepidopterists.org/about/>

Hibernacula Hunt



Red Spotted Purple Hibernating Caterpillars

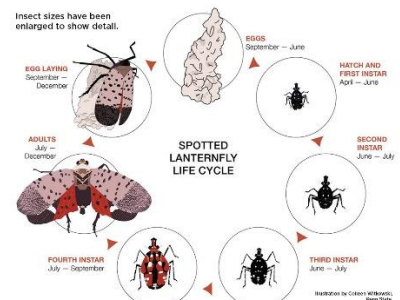
It was brought up at the September meeting about possibly getting together to do a hibernacula walk. Brenda led a hunt several years ago at the Haggerty Corporate Park located on Haggerty between Palmer and Michigan Avenue on the west side in Canton. I thought this would be a

great activity for next March or April or before the the leaves appear. Some of the hibernacula that could be found are Red Spotted Purples and Viceroy's.

Featured Article: The Spotted Lanternfly:



What is a spotted lanternfly? (*Lycorma delicatula*) Spotted lanternfly is an invasive insect that has been found in Michigan. It feeds on a wide range of fruit, ornamental and woody trees, with tree-of-heaven being one of its preferred hosts. It can move long distances by hitchhiking or laying egg masses on vehicles, outdoor equipment and firewood. This pest can have negative effects on specialty crops and be a nuisance in outdoor areas.



The Nectar News

Official Newsletter of the
Southeast Michigan Butterfly Association

Egg mass: 1.5 inches long.

Found on outdoor surfaces such as trees and vehicles. Egg masses resemble old chewing gum with a gray, waxy, putty-like coating. Most visible September-May.



Juvenile stage: 1/4 - 1/2 inch long.

Found on a variety of crops, plants and trees. Wingless and beetle-like, black with white spots, red patches as they mature. Most visible May - September.



1st instar nymph
(seen May-July)



4th instar nymph
(seen July-September)



Adult stage: 1 inch long.

Found on a variety of crops, plants and trees. Folded wings are gray/brown with black spots. Open wings show yellow, black, red. Most visible August - October.



Additional species info:

Range

Native to Eastern Asia, the spotted lanternfly has spread in several eastern states, including Pennsylvania, New Jersey, New York, Maryland, Virginia, Ohio and others. *In Michigan they have been detected in areas of Wayne, Oakland, and Monroe, Counties!*

Local concern

Spotted lanternfly feeds on more than 70 different plants including grapes, apples, hops and hardwood trees. The insects cause direct damage by sucking sap from host plants and secreting large amounts of a sugar-rich, sticky liquid called honeydew. This honeydew and the resulting black sooty mold can kill plants and foul surfaces. The honeydew often attracts other pests like yellow jackets, flies, and ants, affecting outdoor recreation and complicating crop harvests.

How it spreads

Although spotted lanternflies cannot fly long distances, they lay eggs on nearly any surface like cars, trailers, firewood, outdoor furniture and more. Before leaving an infested area, check vehicles, firewood and outdoor equipment for unwanted hitchhikers.



The Nectar News

Official Newsletter of the
Southeast Michigan Butterfly Association

How can I report Spotted Lanternfly sightings?

Before reporting a sighting, be sure to check out the link below for insects that are often mistaken for spotted lanternflies. [Spotted lanternfly look-alikes](#) **Know before you squish!** Here are a couple of lookalike examples.

Tiger Moths



The Giant Leopard Moth



The Milkweed Beetle



There are several ways to report a sighting. First make sure to take multiple photos, note date, time, and location.

Complete a form on the Michigan department of Natural Resources website <https://www2.dnr.state.mi.us/ors/Survey/38#:~:text=Please%20report%20any%20sightings%20of,will%20assist%20in%20proper%20identification.>

Submit a report with photos to: <https://www2.dnr.state.mi.us/ors/Home>

Contact Joanne Foreman, the Invasive Species Communications Coordinator, at 517-284-5814 or email at: ForemanJ@michigan.gov

What should I do if I see one?

- **Spray with vinegar, neem oil, or soapy water**
- **Scrape egg masses off surfaces with a knife. Seal in a plastic bag or place them in hand sanitizer or alcohol to kill them**
- **Squish on site**

Check out the story that **channel 4, WDIV, did recently on the lanternfly problem in our area. Click the link below.**

<https://www.clickondetroit.com/news/local/2024/09/30/see-it-squish-it-essential-tips-for-michigan-to-combat-its-least-wanted-invasive-species/>



Newsletter article contributors welcome! I'm always looking for content to put in the quarterly newsletter. Since we have so much butterfly knowledge among our membership, would any of you be interested in writing an article or sharing a story or funny anecdote? It can be any length, short or long.

Also, if you have any ideas for speakers or field trips, please send them to me or email them to the SEMBA email address at: sembabutterfly@yahoo.com

It won't be long before the holiday season is here. The 2024 and 2025 SEMBA board wishes you all a safe and happy Holiday Season!





The Nectar News

Official Newsletter of the
Southeast Michigan Butterfly Association

2025 Calendar of Events

January 16, 2025

At Crosswalk Community Church, 7:00pm

TBD

February 20, 2025

At Crosswalk Community Church, 7:00pm

TBD

March 20, 2025

At Crosswalk Community Church, 7:00pm

TBD

April 17, 2025

At Crosswalk Community Church, 7:00pm

TBD

May 15, 2025

At Crosswalk Community Church, 7:00pm

TBD

June 19, 2025

At Crosswalk Community Church, 7:00pm

TBD

July 17, 2025

At Crosswalk Community Church, 7:00pm

TBD

August 21, 2025

At Crosswalk Community Church, 7:00pm

TBD

September 18, 2025

At Crosswalk Community Church, 7:00pm

Remember to bring Teacup Raffle items

October 16, 2025

At Crosswalk Community Church, 7:00pm

Tea Cup Raffle and Pot Luck

